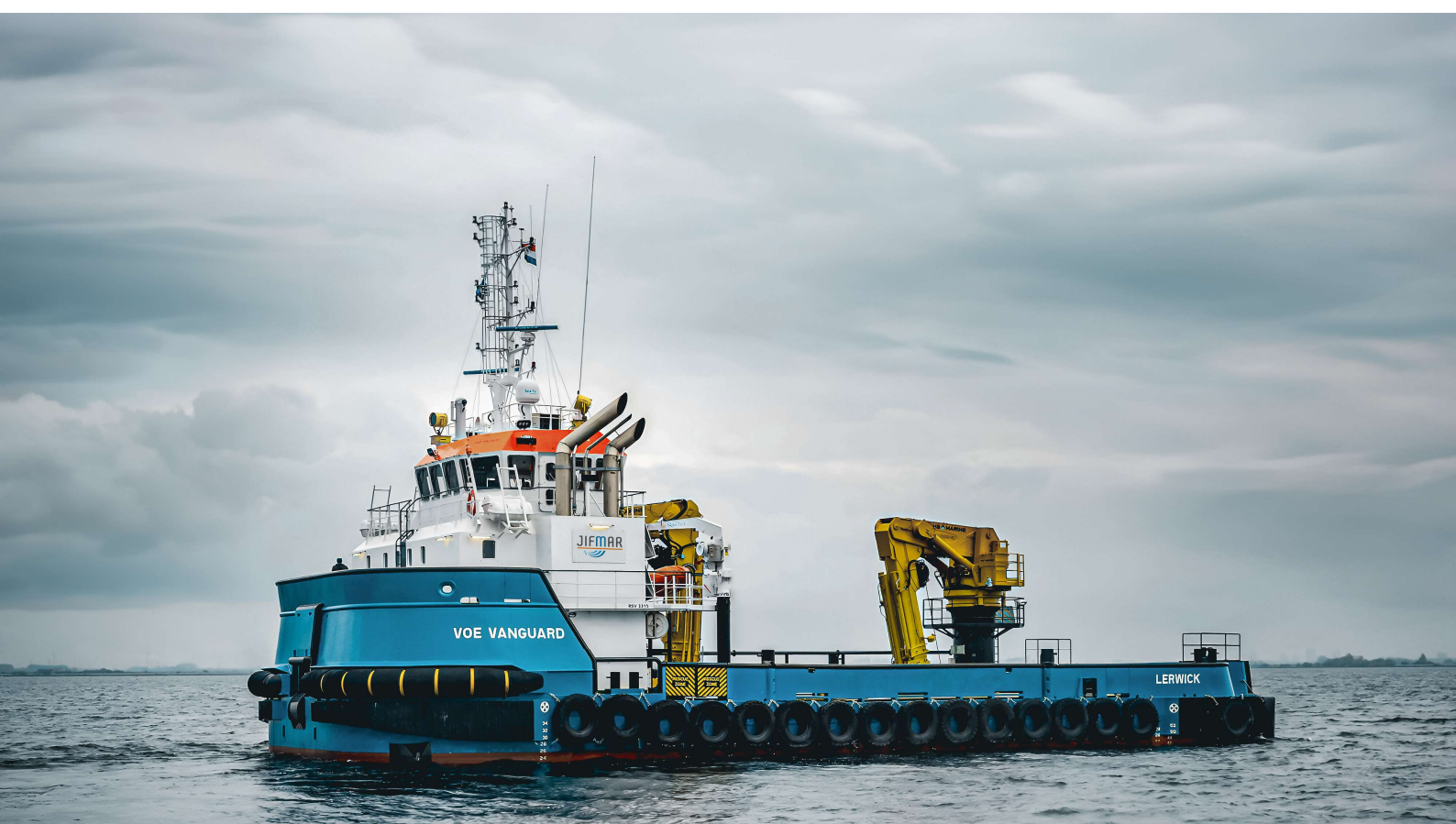


VOE Vanguard

DP MPV

DEC 11 2024



MAIN SPECIFICATIONS

General

Type of vessel:	Damen Renewables Service Vessel 3315
Classification:	BV 1 \boxtimes HULL • MACH Anchor Handling Vessel ; Tug Unrestricted navigation • AUT-UMS DYNAPOS AM/AT R with swing thrusters in use DYNAPOS AM/AT with main azimuths & stern tunnel
IMO:	9809693
Callsign:	MBEN9
MMSI:	232008636
Flag:	UK
Tonnage (UMS/GT):	499

Dimensions

Length O.A.:	33.18 m
Beam O.A.:	14.50 m
Draught aft (range):	2.62 m / 4.95 m (DP2 - aft thruster down)
Max deadweight:	209.80 t
Clear deck area:	300 m ²
Deck loading:	10 t/m ²

Tank Capacities

Fuel oil:	125 m ³
Fresh water:	34.6 m ³
Black/grey water:	7.70 m ³
Ballast water:	47.60 m ³
Dirty oil:	3 m ³

Performances

Bollard pull ahead:	39.20 t
Bollard pull astern:	40.60 t

JIFMAR GROUP

→ Contact: sales@jifmar.net



This document is for guidance and information only. Information provided is given under good faith and is non-contractual. This document may be updated without advanced notice. It may not be published, redistributed or reproduced without the prior written consent of ©Jifmar Group.



DETAILED SPECIFICATIONS

Propulsion System

Fwd azimuth thrusters:	2 x Rolls Royce US 195 P6 Azimuth thrusters ,1300 mm with nozzel - 2 x 480 kW
Aft azimuth thrusters:	2 x Rolls Royce TCNS 73-50-180 Azimuth thrusters (swing up) with nozzel - 2 x 800 kW
Stern thruster:	1 x VETH VT400 - 504 tunnel thruster
Main engine:	Diesel electric

Deck Lay-out

Crane FWD:	HS MARINE AKC 370/21 HE3 24 t @ 10 m, 9 t @ 21 m, winch 11 t
Crane AFT:	HS MARINE AKC 550/20 HE3, 34 t @ 10.5 m, 15 t @ 20 m, winch 15 t
Anchor handling winch:	150 t pull, 200 t brake
Towing winch:	150 t pull, 200 t brake
Tugger winches:	4 x 12t pull, 18 t brake
Towing hook:	Mampaey 45 t
Stern roller:	175 t SWL 4 m, Ø 1400 mm
Capstan:	WK 2 t

Accommodation

POB:	15 persons +4 in a TLQ (optional)
Cabins:	3 single 6 double + 2 double in a TLQ (optional)

Auxiliary Systems

Generator sets:	2 x Caterpillar 3512C HD 2125 kVA each
Harbour set:	1 x Caterpillar – C 4.4, 117 kVA @ 1500 rpm

Navigation & Communication

GMDSS:	A1, A2, A3
Satellite communication:	Starlink VSAT

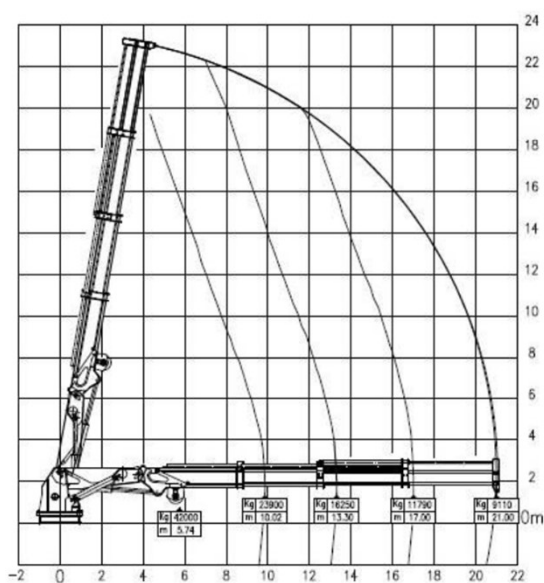
Dynamic Positioning

DP system manufacturer:	Kongsberg K-POS DP-21
DP class:	DP2

CRANE DIAGRAMS

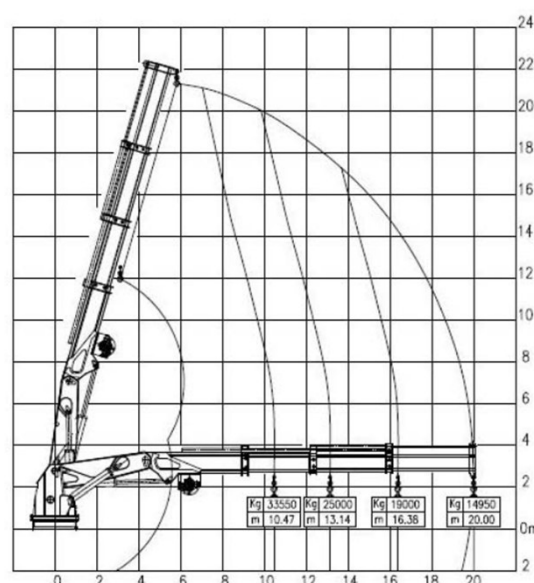
FWD hydraulic crane

Voe Vanguard FWD Cranes HS MARINE AKC 370/21 HE3:



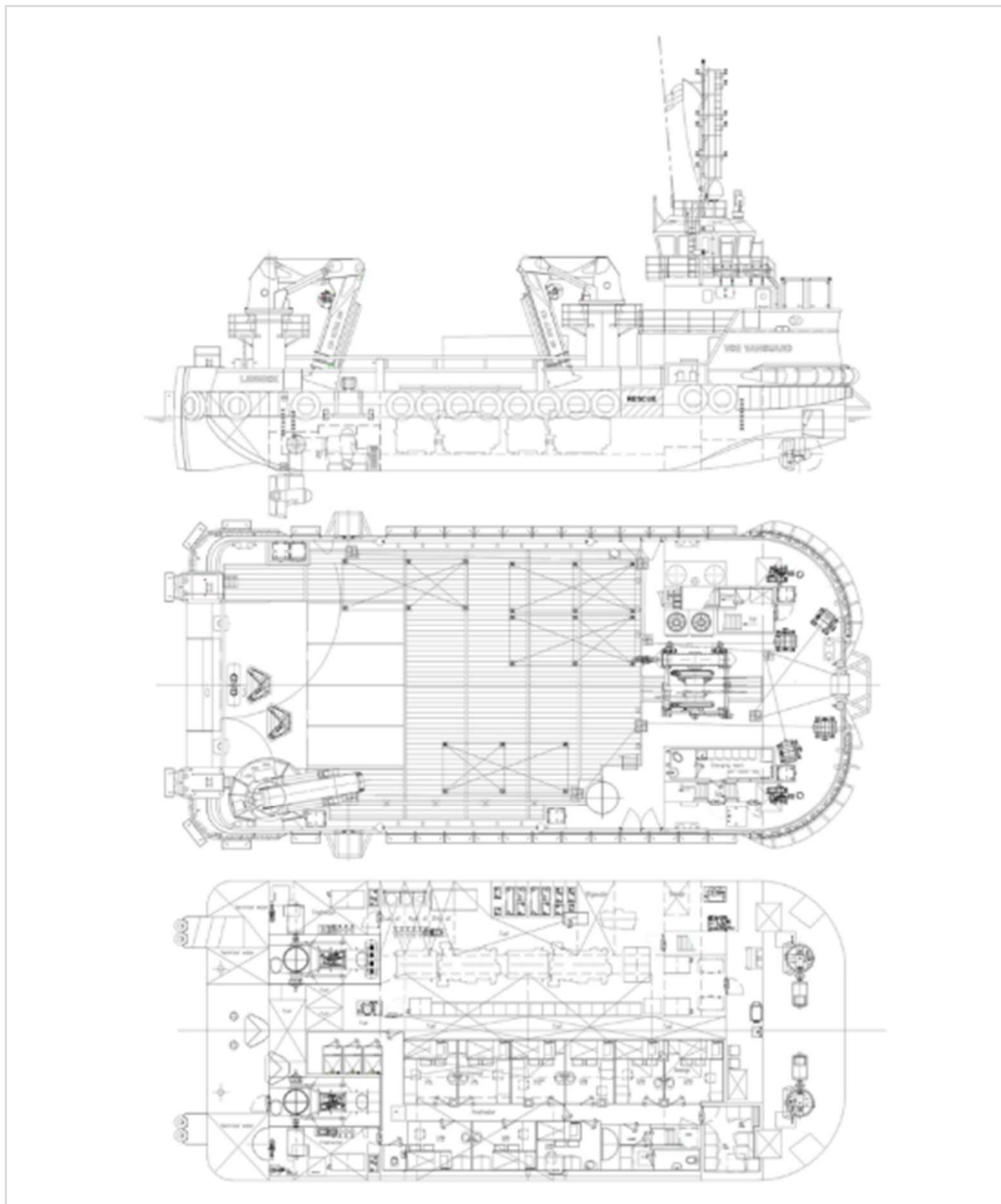
AFT hydraulic crane

Voe Vanguard AFT Cranes HS MARINE AKC 550/20 HE3 :



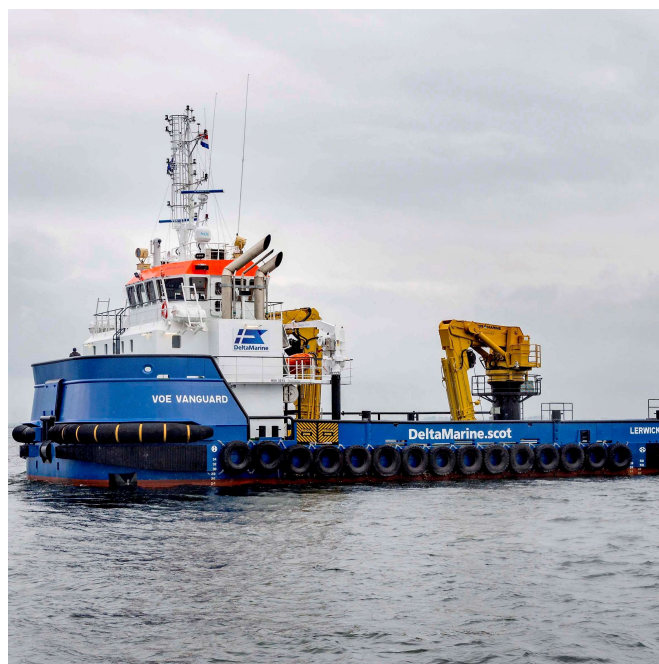
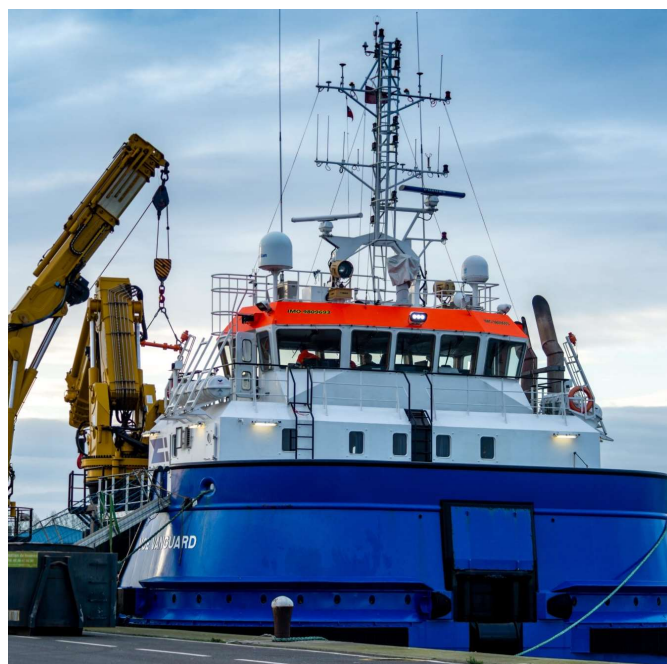


GENERAL ARRANGEMENT





ADDITIONAL PICTURES



JIFMAR GROUP

→ Contact: sales@jifmar.net



This document is for guidance and information only. Information provided is given under good faith and is non-contractual. This document may be updated without advanced notice. It may not be published, redistributed or reproduced without the prior written consent of ©Jifmar Group.