

JIF Mairi

Multi-Purpose Vessel

AUGUST 12 2024



MAIN SPECIFICATIONS

General

Type of vessel:	Multi-Purpose Vessel
Classification:	BV 1 \boxtimes HULL • MACH Special Service multi-purpose vessel Unrestricted navigation • AUT-UMS MCA Workboat Category 2
IMO:	9923918
Callsign:	MISZ7
MMSI:	232033759
Flag:	UK
Tonnage (UMS):	159

Dimensions

Length O.A.:	23.60 m
Beam O.A.:	9.04 m
Draught aft (range):	2.10 m – 2.40 m
Clear deck area:	120 m ²
Deck loading:	6 t/m ²

Tank Capacities

Fuel oil:	56 m ³
Fresh water:	59 m ³
Black/grey water:	1 m ³
Dirty oil:	1 m ³

Performances

Bollard Pull ahead:	14.10 t
---------------------	---------

JIFMAR GROUP

→ Contact: sales@jifmar.net



This document is for guidance and information only. Information provided is given under good faith and is non-contractual. This document may be updated without advanced notice. It may not be published, redistributed or reproduced without the prior written consent of ©Jifmar Group.



DETAILED SPECIFICATIONS

Propulsion System

Main engines:	2 x Caterpillar C18
Power output:	894 kW

Auxiliary Systems

Generator set:	1 x Caterpillar
Harbour set:	1 x Caterpillar C4.4 107 kW

Deck Lay-out

Crane FWD:	Heila- HLRM140-4S 8 t @ 14.09 m
Crane AFT:	Heila- HLRM 25-4S 2 t @ 14.50 m
Anchor handling winch:	50 t pull, 71 t hold, 520 m x 36 mm
Tugger winch:	10 t, 170 m x 22 mm
Bow roller:	5 m x 820 mm
Capstans:	3 x 3 t

Accommodation

POB:	6
Cabins:	3 double

Navigation & Communication

GMDSS:	A1
--------	----

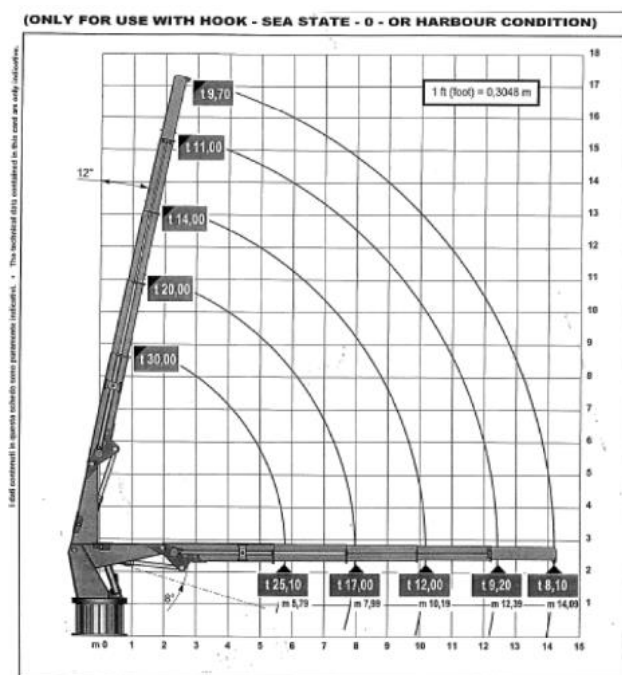
Specific Features

Built-in oxygen generator for water treatment

CRANE DIAGRAMS

FWD hydraulic crane

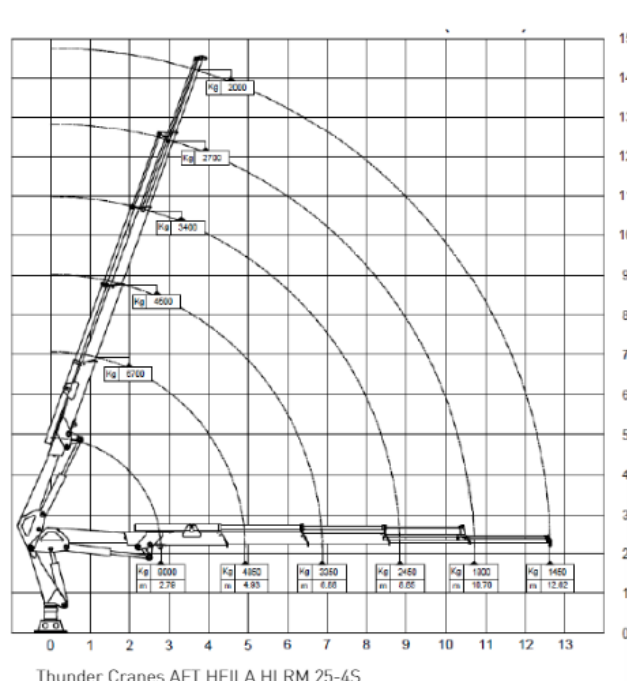
JIF MAIRI Cranes FWD HEILA HLRM 140-4S



JIF MAIRI Cranes FWD HEILA HLRM 140-4S

AFT hydraulic crane

JIF MAIRI Cranes AFT HEILA HLRM 25-4S





ADDITIONAL PICTURES

