

# JIF Worker

Multicat

APRIL 15 2025



## MAIN SPECIFICATIONS

### General

Type of vessel:	Multi-Purpose Vessel EuroCarrier 2409
Classification:	BV 1  HULL • MACH Special Service multi-purpose vessel Unrestricted navigation • AUT-UMS MCA Workboat Category 2
Callsign:	MLSF7
MMSI:	228002700
Flag:	UK
Tonnage (UMS):	99

### Dimensions

Length O.A.:	23.60 m
Beam O.A.:	9.04 m
Draught aft (range):	2.10 m – 2.40 m
Clear deck area:	125 m <sup>2</sup>
Deck loading:	6 t/m <sup>2</sup>

### Tank Capacities

Fuel oil:	68.10 m <sup>3</sup>
Fresh water:	46 m <sup>3</sup>
Black/grey water:	1.50 m <sup>3</sup>
Dirty oil:	1.50 m <sup>3</sup>

### Performances

Bollard pull ahead:	18.50 t
Bollard pull:	18.50 t certified

JIFMAR GROUP

→ Contact: [sales@jifmar.net](mailto:sales@jifmar.net)



This document is for guidance and information only. Information provided is given under good faith and is non-contractual. This document may be updated without advanced notice. It may not be published, redistributed or reproduced without the prior written consent of ©Jifmar Group.



## DETAILED SPECIFICATIONS

### Propulsion System

Main engine:	2 x Cummins / TYPE QSK 19-M
Power output:	1118 kW

### Auxiliary Systems

Generator sets:	2x Caterpillar C4.4 107 KVA
Harbour set:	No

### Navigation & Communication

GMDSS:	A1 + A2 + A3
Satellite communication:	Starlink

### Accommodation

POB:	12 daylight / 8 24h
Cabins:	4 double

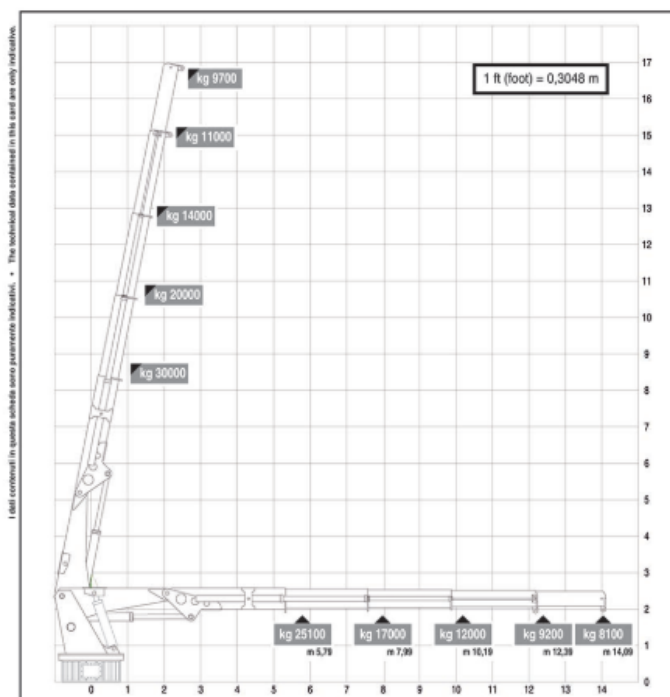
### Deck Lay-out

Crane FWD:	HEILA HLRM 140-4S
Crane AFT:	HEILA HLRM 25-3S
Anchor handling winch:	50 t 360 m x 36 mm & 100 m x 50 mm
Tugger winch:	10 t 170 m x 22 mm
Towing hook:	10 t
Bow roller:	5 m x 820 mm
Towing pins:	2 x fwd manual pins
Boat landing:	Possible
Capstans:	2 x 5 t
Moonpool:	No

## CRANE DIAGRAMS

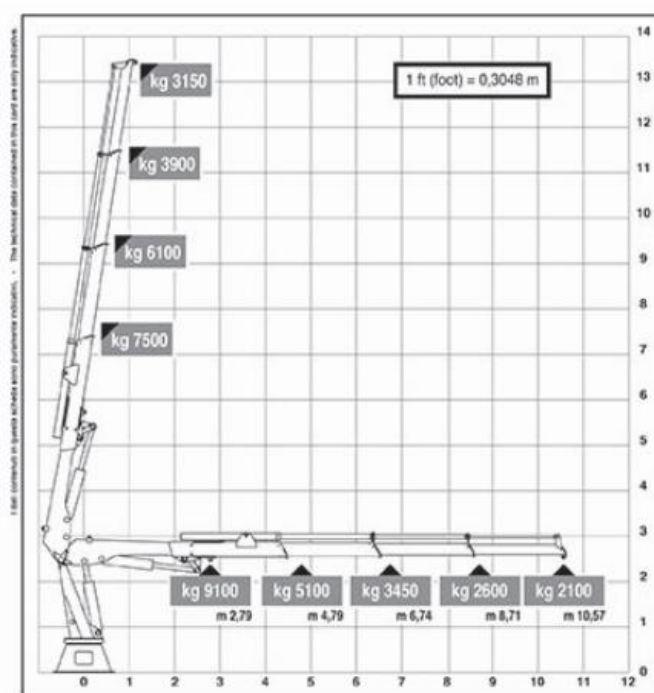
### FWD hydraulic crane

JIF Worker FWD Cranes HLRM 140-4S:



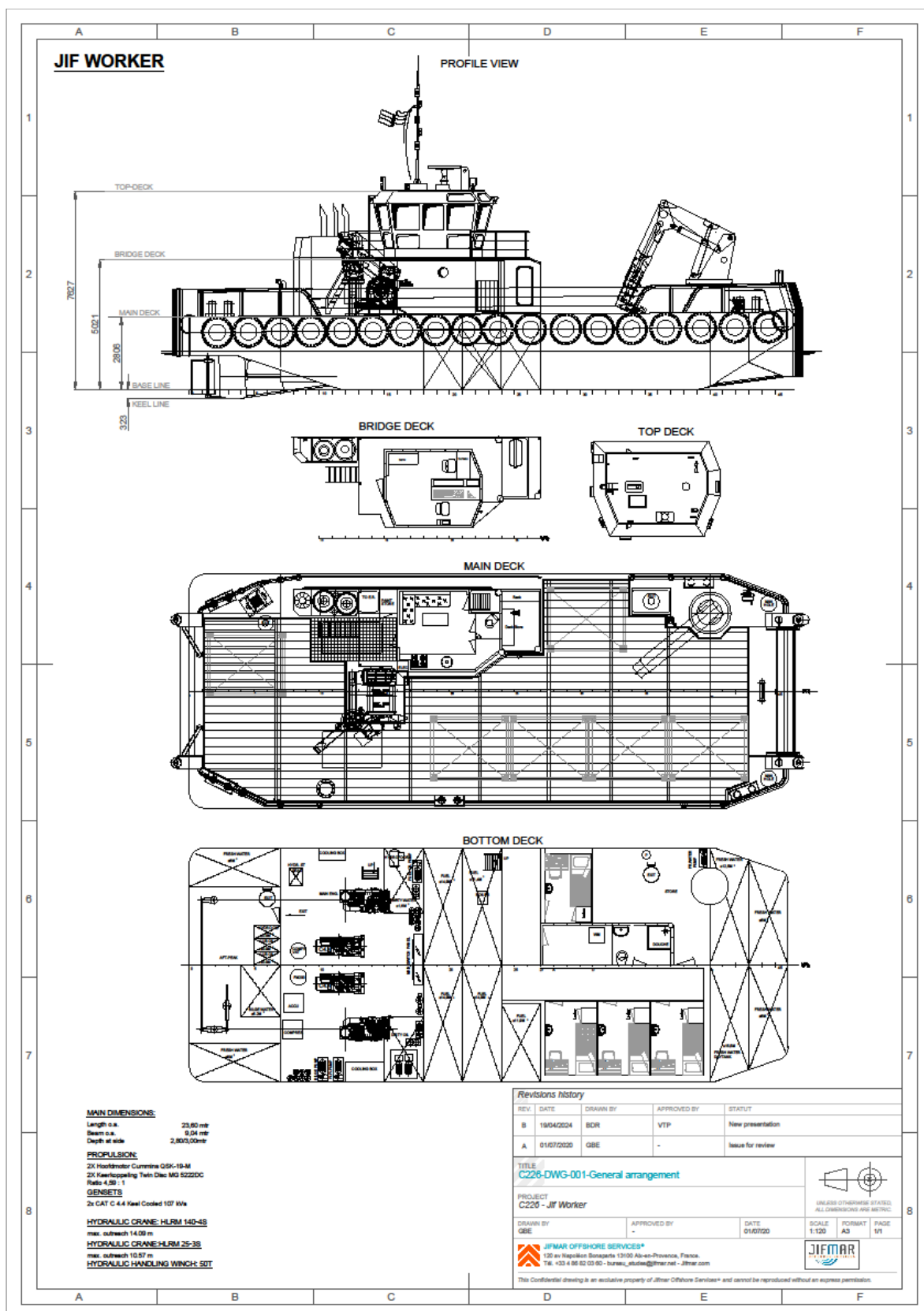
### AFT hydraulic crane

JIF Worker AFT Cranes HLRM 25-3S:





GENERAL ARRANGEMENT





## /// ADDITIONAL PICTURES

